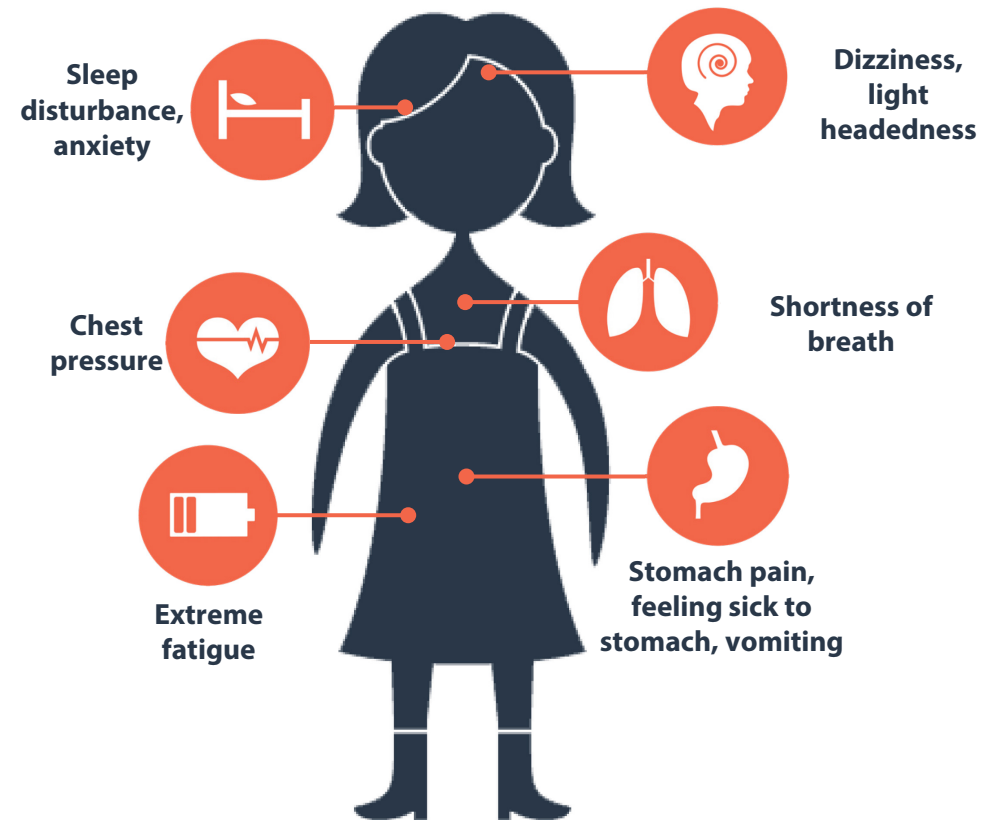
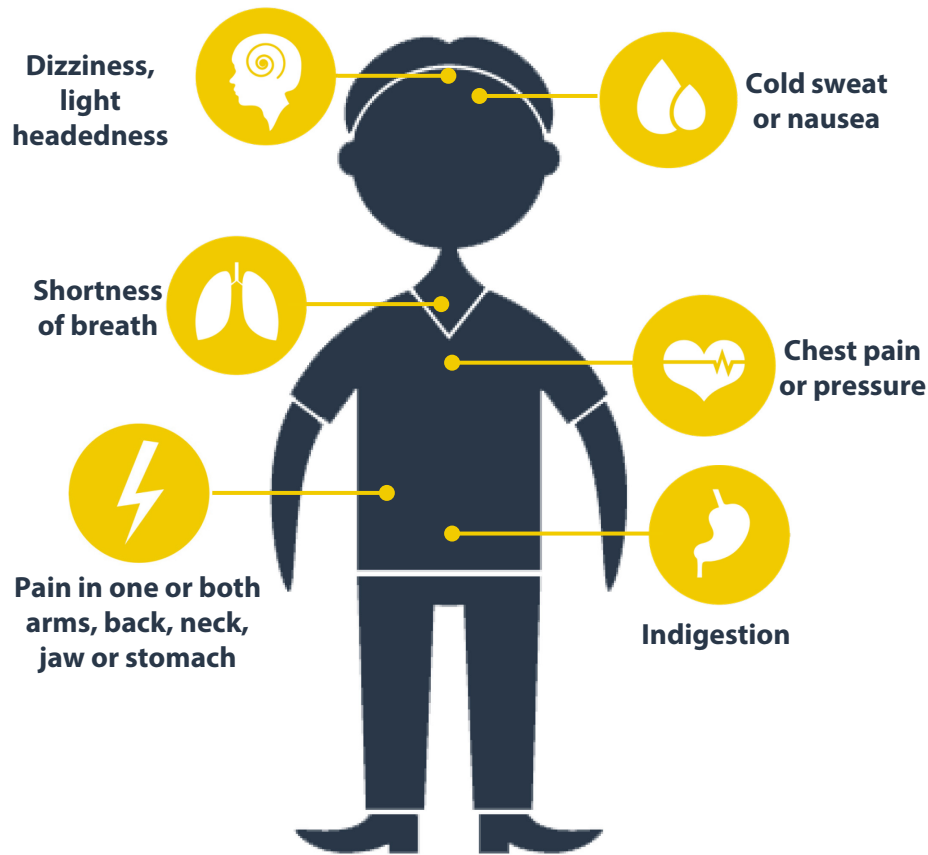


# HEART ATTACK WARNING SIGNS

Many heart attack symptoms are the same for both men and women. However, women can sometimes have symptoms you might not recognize as a heart attack.

For both men and women, the most common heart attack symptom is pain or discomfort in your chest. But women are more likely than men to have heart attacks that do not show obvious symptoms. These are sometimes called "silent heart attacks." Know and talk about your risk factors for heart attack with your doctor.

**Every minute counts during a heart attack. If you are experiencing any of these symptoms, call 911 right away.**



**Women may not have the chest pain most often recognized as a sign of a heart attack.**