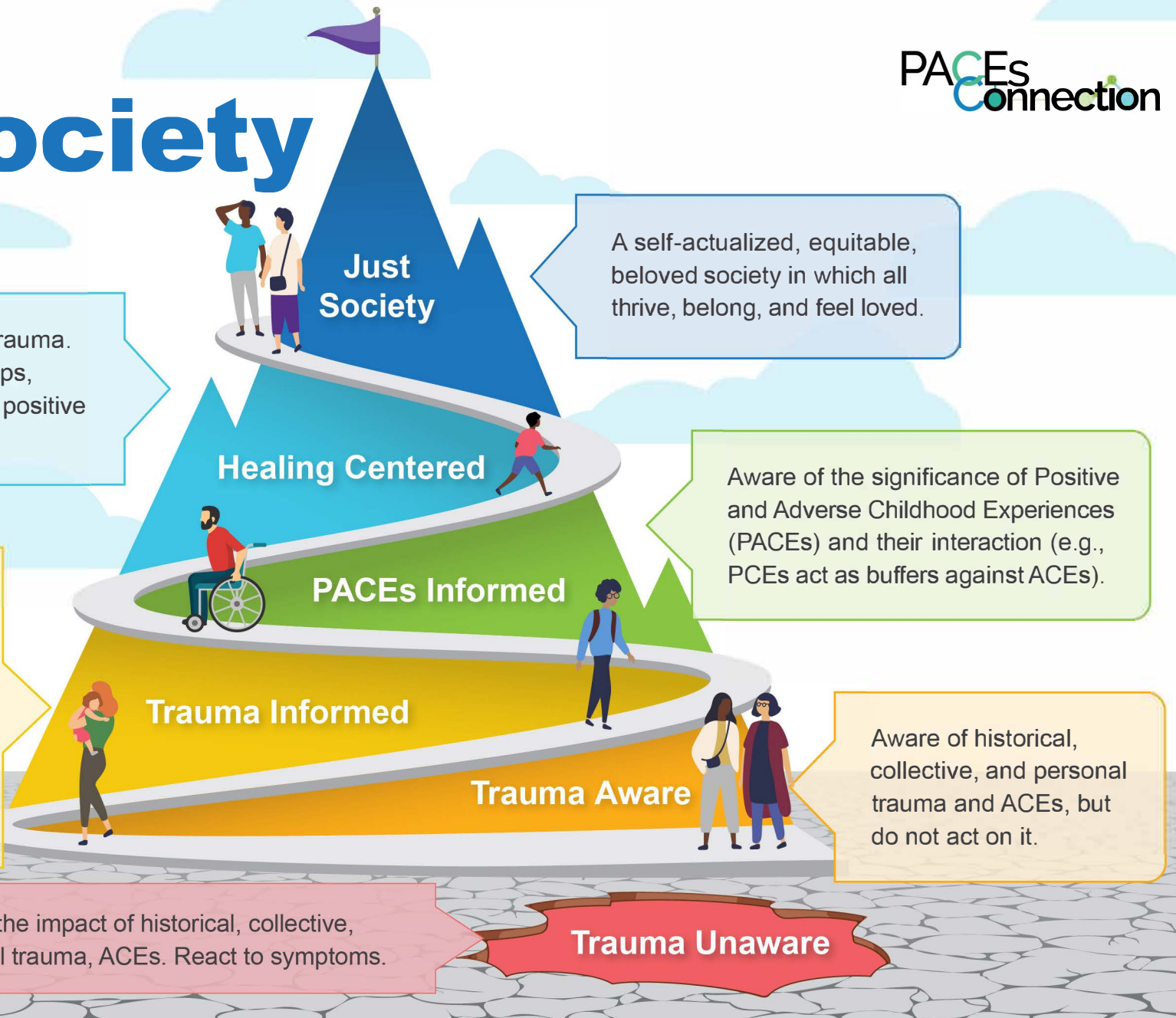


Path to a Just Society



What can we do to create a world in which all feel safe, valued, and loved? We can learn about, prevent, and heal adverse childhood experiences (ACEs) and create more positive childhood experiences (PCEs) in our communities. We can start or join a positive and adverse childhood experiences (PACEs) initiative to accelerate change. Join us on the path to creating a just society.

Thank you to members of the PACEs Connection Race and Equity Workgroup for their vision and contributions.