



Kenai Peninsula Collaborative Care Summit

Trauma-informed Practices Training for Employers and service providers

Presented by: Jodi Stuart

Who am I?

Background in secondary education and curriculum development

Provide training to a multitude of agencies and agency types

Provide training via Zoom and in-person

**Have provided trauma-informed care training since 2018
throughout the State**

Continued education regarding trauma-informed care

Completed the Connection Resource Community Accelerator

Program about trauma-informed care in 2023

Began Clinical Neurocriminology Certification 2024

Training Offerings



For Education



For Criminal
Justice Systems



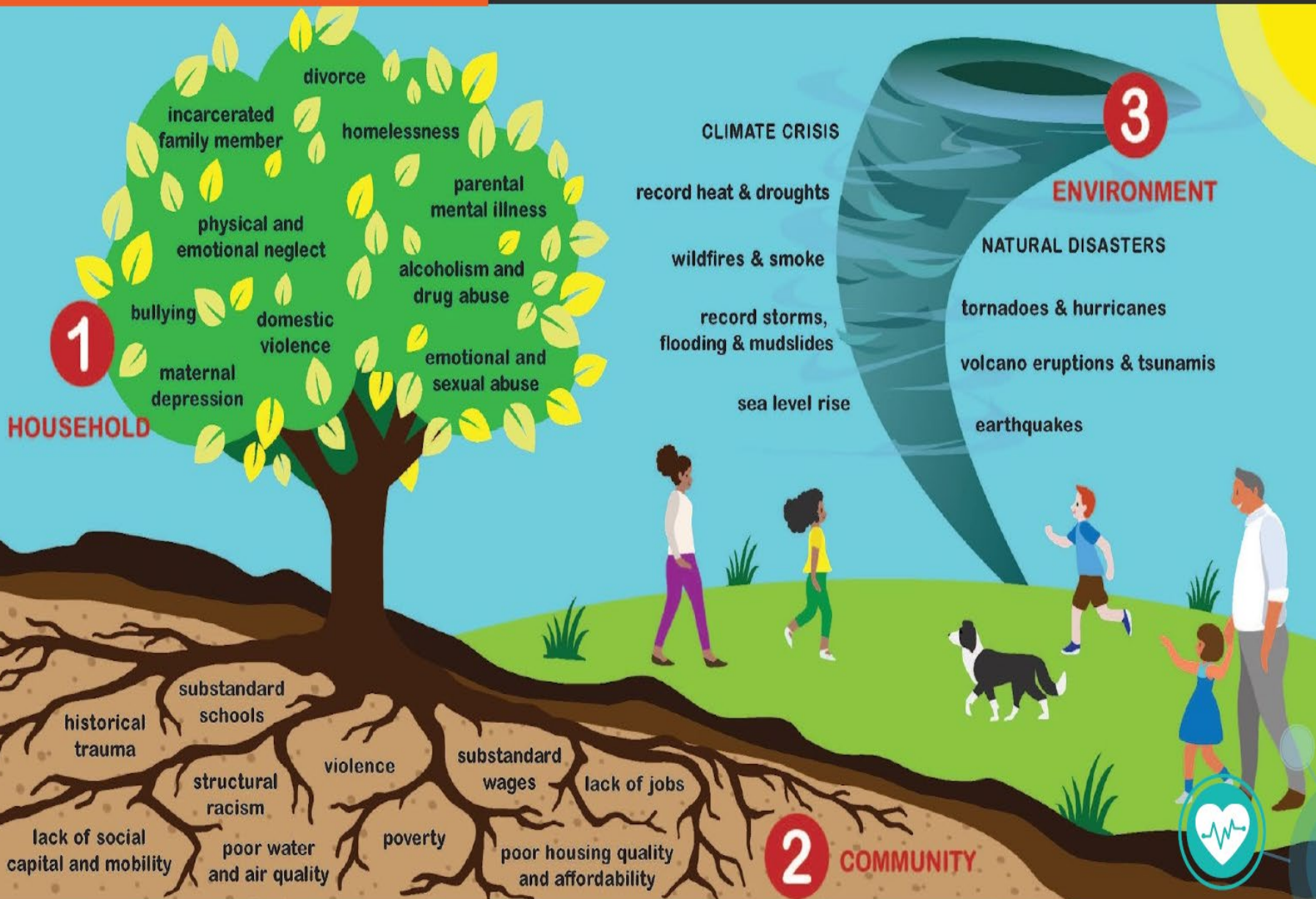
For Medical
Providers







3 Realms of ACEs

ACEs Connection accelerates the global movement to prevent and heal adverse childhood experiences (ACEs), and supports communities to work collaboratively to solve our most intractable problems. Left unaddressed, toxic stress from ACEs harms children and families, organizations, systems and communities, and reduces the ability of individuals and entities to respond to stressful events with resiliency. The ACEs in these three realms intertwine throughout people's lives, and affect the viability of organizations, systems and communities.

Thanks to **Building Community Resilience Collaborative and Networks** and the **International Transformational Resilience Coalition** for inspiration and guidance. Please visit [ACEsConnection.com](https://www.aceconnection.com) to learn more about the science of ACEs and join the movement to prevent ACEs, heal trauma and build resilience.



Knowing about ACEs changes what people believe about themselves

-  They weren't born bad.
-  They weren't responsible for the things that happened to them when they were children.
-  They coped appropriately, given that they were offered no other ways – it kept them alive.
-  They can change.



**Understanding
Systems of
Meaning:
The
Assumption of
Danger**

**Common *triggers* for individuals
who have experienced
developmental trauma**

Perception of a lack of power

Unexpected change/transitions

Feeling shame

Feeling vulnerable or frightened

Feeling threatened or attacked

Intimacy and positive attention

Sequential Processing

People who've experienced trauma can have a difficult time:

- following long lists
- planning, anticipating, and hoping

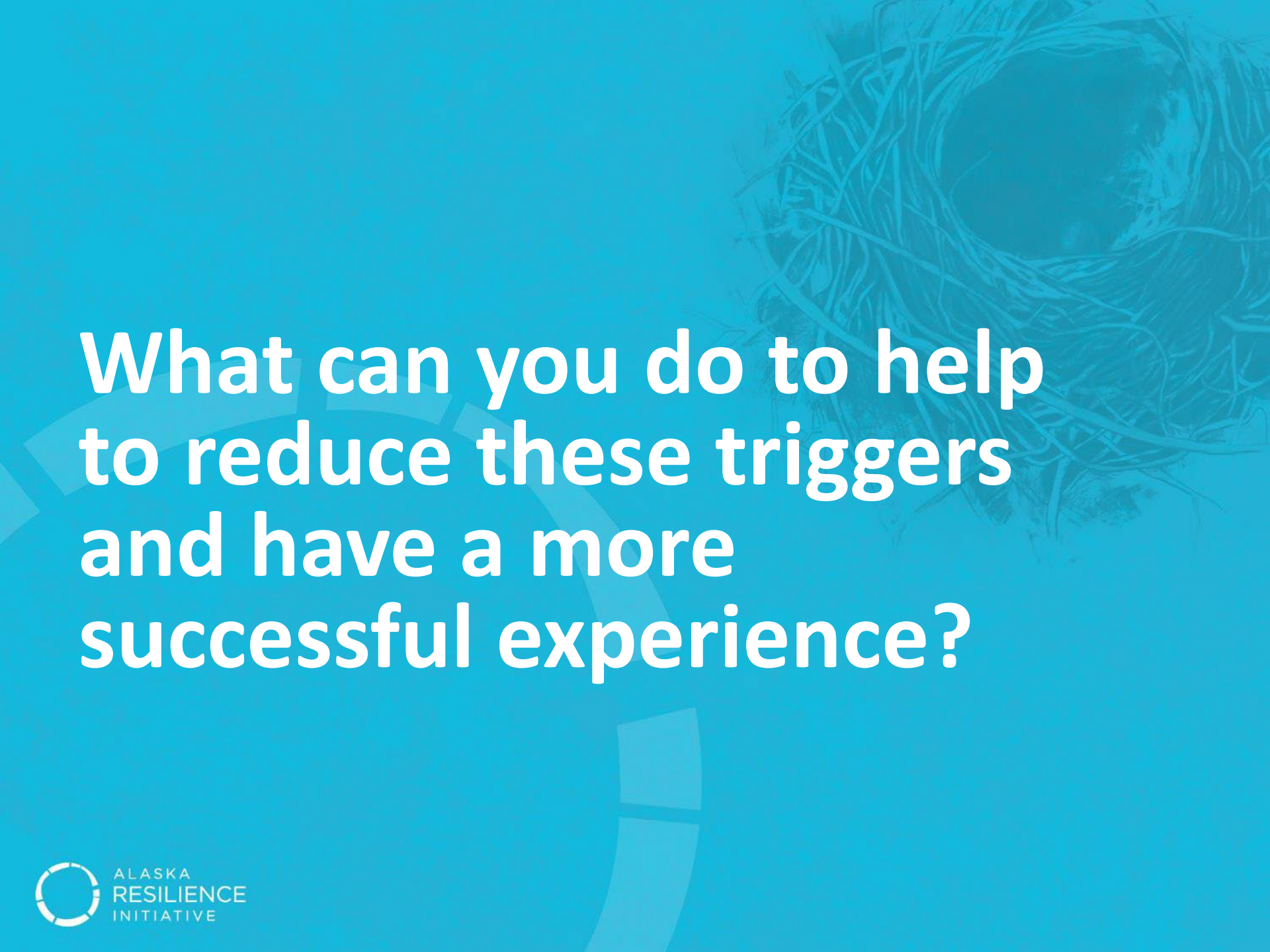
Physical Need Fulfillment Strategies

- Physical nurturance-seeking behavior (Sexualized behaviors, poor physical boundaries)
- Hoarding or stealing food, clothing, objects


“The expectation that we can be immersed in suffering and not be touched by it is as unrealistic as expecting to be able to walk through water without getting wet.”

-Naomi Rachel Reme





**What can you do to help
to reduce these triggers
and have a more
successful experience?**

A top-down view of approximately ten hands of various skin tones (ranging from light to dark brown) stacked in a circle. The hands are positioned with fingers pointing towards the center, creating a sense of unity and collective support. The background is a dark, textured grey.

**Recognize your own
triggers and needs**

Provide Opportunities for Choice, Empowerment, Control



Questions?

